

## DIGI printing scales

**The preferred choice - SM500 boasts an extensive range that meets your every need.**

- Available capacity 6 & 15kg
- Standard 1MB memory expandable up to 6MB
- 1/3,000 Multi-interval
- 80mm Thermal Printer Head
- Printing speed of 100mm/sec
- Choice of Colour LCD or FIP display with scrolling messages and commodity name description
- RS-485, Ethernet and RF interface options
- Scale management software
- Advance network capabilities



---

**The preferred choice - SM300 offers value for money.**

- Available capacity - 6, 15 & 30kg
- Standard 1MB memory expandable up to 2MB
- 1/3,000 Multi-interval
- Printing speed of 80mm/sec
- LCD display with back light
- RS-485, Ethernet and RF interface options
- Scale management software



---

**The advanced Service Printing Scale**

- Direct thermal/high speed thermal print
- Easy and quick loading of receipt or label
- Update the date and time automatically with the clock built-in
- Quick response to the weight change
- Capacity: 3kg,6kg,12kg,15kg,30kg,6lb,12lb,15lb,30lb
- Wireless LAN network 2-in-1 Bridge(optional)
- 32x202 Full Dot Matrix Green LCD Display
- RS232 and Ethernet interface for data updating



**Sleek, stylish & space saving, the new generation PC based counter scale projects an elegant touch to your store.**

- Attractive & interactive 8.4" TFT Operator touch panel makes operation faster & easier.
- Eye catching large dot matrix LCD customer display available in 3 colours for effective advertising messages & graphics
- Larger label roll compartment effectively reduces down time during label changing
- Fast printer speed
- Optional receipt printer prints receipts and other useful information such as nutritional facts, cooking recipes.
- Optional built in laser barcode scanner for POS and price verification functions
- Removable, water resistant number key pad for better hygiene
- CPU: VIA Eden 400Mhz (128MB SDRAM, 512MB Maximum)
- Optional 32 Bit Proprietary PCI for EL-Display
- I/O Interface: RS232, PCMCIA for wireless RF IEEE802.11b, Ethernet 10 / 100 Base T, USB, PS2 Keyboard, RS485)



**A compact, easy-to-operate printer with distinctive labeling capability**

- Touch screen for simple operation
- Large data memory (expandable to 8MB)
- Advanced networking capability using RS-485, TCP/IP & Wireless interfaces
- Prints POP images with BMP files
- High speed printing at 100mm / second.
- Wide selection of flexible sizes and print formats
- Standard RS-232C interface for FL-1 or PC
- Up to 576 preset keys for fast moving items



**Robust and sturdy, the DPS90 will streamline your prepacking operation.**

- LCD touch screen display for easy labelling and programming operation
- Standard 1MB memory expandable to 8MB
- Up to 576 preset keys
- High-quality sales promotion labelling including POP image, mark down function & second labelling function
- Large, low profile stainless steel platter (IP-46 standard)
- RS-485, Ethernet or RF interface for advanced networking system
- Scale management software



## Waterproof weighing scale to meet your needs.

- LCD display
- Waterproof weighing scale
- One-touch tare subtraction function.
- Light-weight, compact design.
- A/C adapter or battery operation according to your needs.
- Capacity: 1.5kg,3kg,6kg,15kg,30kg
- Dimensions: 240x270x120mm



## Packed with user-friendly features for perfect weighing operations

- More than 1600 hours continuous use with alkaline battery
- One touch tare subtraction
- Double-side display
- Up to 30 kg capacity
- Auto power-off function
- Low battery warning indicator
- AC or battery operation according to your needs.



## Open My Mind, Embed Your Demand

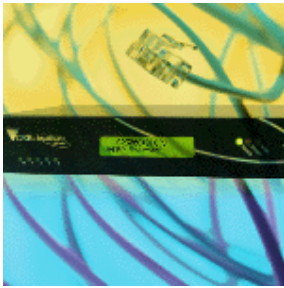
- 10.4" TFT LCD (800 x 600) Operator Display
- Full Dot LCD Customer Display(32x128Dot)
- VIA C3 1GHz CPU/ 256MB DDR Memory/ 20GB 2.5" HDD
- 3x Com, 2x Ethernet , 4x USB , 1x Parallel, 1x Cash Drawer Port, PS/2 keyboard and Mou
- 1x Built-in modem
- 78 keys Stroke Keybaord with
- Resistive Touch Panel (opional)
- 10.4" TFT LCD Customer Display (Optional)



## POS ECR (Linux based), only A-4 size space saving design and tall operator-keypad

- 10.4" VGA (640 x 480) TFT Operator Display with Resistive Touch Panel
- Full Dot FIP Customer Display (64 x 256 Dot)
- Internal CD-R/W (Optional)
- Data Back Up Using Rechargeable Battery
- Com1 , Ethernet , USB , Standard PS2 keyboard and Mouse , Cash drawer interfaces , Scanner port
- ATX Power Support / LAN Wake Up Support
- VIA Eden 667MHz
- System memory with of SO-DIMM Socket Support





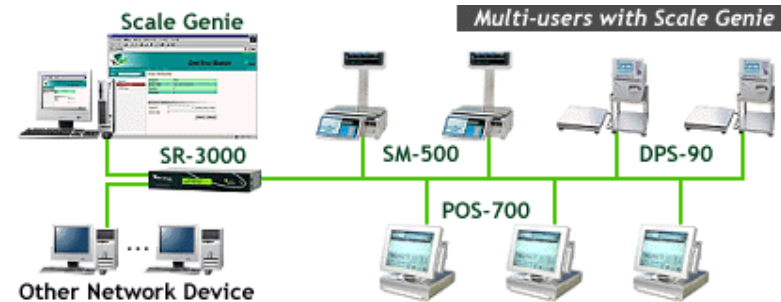
## DIGI Store Controller

Scale Router SR-3000 is a general purpose network access device designed for the retail industry. It allows seamless integration of existing proprietary scale networks to enterprise-wide corporate networks.

The networking software is based on Linux

Digi Access Software and Digi Configuration Manager integrates and adapts these existing hardware and software to cater to the needs of the retail business.

The proven hardware design of the PC architecture, the mature networking software in Linux, and Digi's experience in developing embedded software for the retail market, makes SR3000 the ideal network retail solution.



### The multi purpose networking router for seamless network integration

- Flexible, scalable & affordable networking solution for retail industry
- Seamless integration of scale networks into enterprise corporate networks
- Improves performance through its store-and-forward buffering
- Supports standard router functions for TCP/IP based services such as HTTP, SMTP, SNMP, RAS, PPP, ISDN, VPN etc
- Supports file and print services using SMB protocol
- Supports Netware connection through IPX/SPX protocol
- POSIX compliant using Linus Operating System
- Scale Genie for PLU management anywhere via LAN or WAN

### Models

⊕ **SR-3000SG**  
Scale Router and Scale Genie

⊕ **SR-3000R**  
Scale Router Software

⊕ **SR-3000H**  
Hardware



Qatar Scales Co. W.L.L